

The best support in the industry

We aim to delight you. We offer the following:

The unique **ARXX Success Guarantee** – When you register your major projects with us, you benefit from a comprehensive checklist of technical support, on-time delivery of products and consultative help to deliver an energy-efficient, high-performance building.

Training – AIA courses for credits, in-person training on the ARXX building system, plus extensive online documentation.

Project design support – ARXX provides a superior level of technical support, including structural engineering and architectural design experts, who are available by phone and email. We provide help from concept to project completion with our building science expertise and knowledge of building codes. CAD files and documentation simplify your design work.

Installation support and job tools – We provide checklists and installation guides, and help by providing tips and answers to last-minute questions. We can also supply a technical expert for on-site project consultation.

Trained installers – ARXX-knowledgeable talent is available throughout North America, with over 35,000 trained installers to date.

The ARXX line-up of products delivers critical performance in specific regions.

EXTREME COLD
EXTREME WIND
EXTREME HEAT
EXTREME TERMITES & PESTS
EXTREME SEISMIC

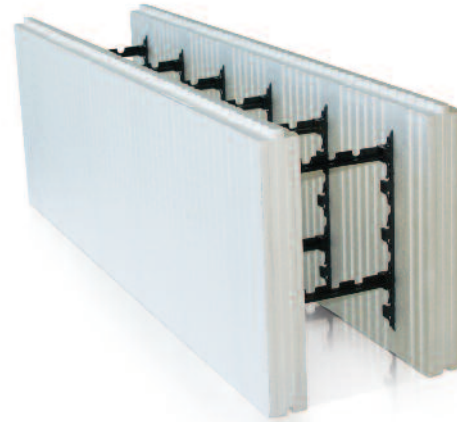


ARXX has multiple high-performance product lines to fit every application

ARXX Edge

(previously ECO-Block)

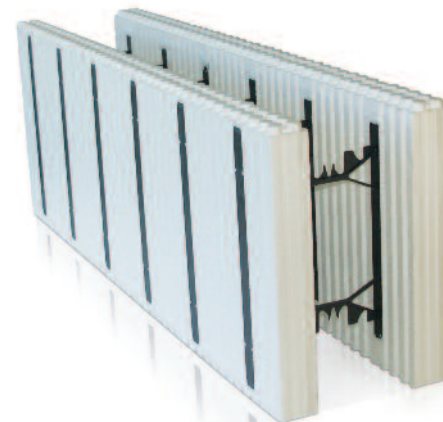
These knock-down blocks provide maximum project flexibility. Snap-in connectors on site, allow you to build walls with 4" to 24" concrete cores. ARXX Edge takes up less space and reduces shipping and storage costs. It's particularly well-suited for commercial projects, especially with tall or very thick walls, or for remote locations.



ARXX Prime

(previously ARXX Forms)

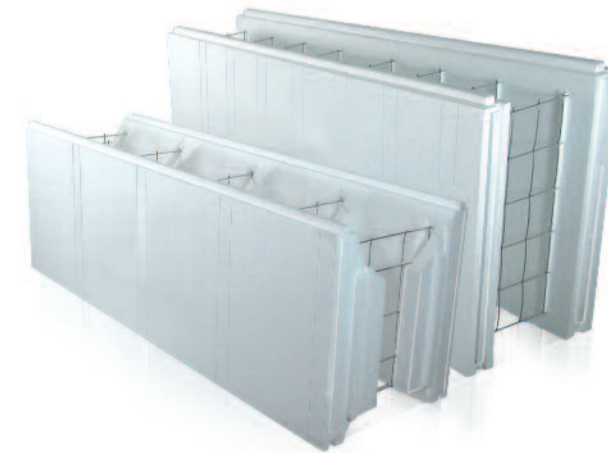
These pre-assembled blocks build walls with 6", 8" or 10" concrete cores. The unique exposed web allows simple attachment of interior or exterior finishes. Suitable for a wide range and scope of projects for residential, institutional, commercial or industrial construction.



ARXX Steel

(previously PolySteel) (Not available in Canada)

These pre-assembled blocks come in two choices: the flat wall, available in 24" height with 6" and 8" concrete cores, and the waffle grid, with 6", 8" or 10" concrete cores. Made with durable galvanized steel connectors, these products are suitable for residential, institutional, commercial or industrial construction.



Features

Use

- 4" – 24" concrete core ICF walls
- Versatile placement of steel reinforcement
- Flat walls, radius walls, arches, shapes, pilasters

Energy

- High savings in energy costs (savings depend on project)
- Significantly greater energy efficiency than 2009 IECC® building code
- Optimal energy savings through reduced air flow and higher thermal mass

Sustainable and green

- Longer building lifespan
- Contributes significantly to LEED® credits
- Contributes to major energy-efficiency and green building programs, including Building America Program, ENERGY STAR®, R-2000®, Novoclimat® and NAHB National Green Building Standard™
- High recycled material content
- Does not emit VOCs
- Does not contain CFCs or HFCs
- Improves indoor air quality

Structural, fire and sound

- Engineered design per ACI 318 capable of tall walls (60') and multi-story buildings
- Can be engineered for highest seismic zone requirements
- 2 to 4 hour fire resistance rating, depending on core thickness
- Noise reduction: STC 50+ (meets code for multi-unit demising walls)
- Resistance to F5 tornado winds (including Florida High Velocity Wind Zones)
- Mold, mildew, termite and pest resistant
- Up to 25% stronger than typical concrete walls
- Demonstrated blast-resistance for U.S. military

Design, build and customize

- CAD library simplifies design
- Compatible with all conventional construction techniques
- Documentation, install guides and checklists speed installation
- Simple and low cost – as framing, insulation, vapor barrier, air barrier, and strapping are integrated into a single step
- Minimizes construction waste

pas·sion

verb |'pɑ sɪ ən|

Creating intense customer satisfaction by delivering:

- 1 High energy efficiency,
- 2 Comfort and security, and
- 3 A faster and better build.
- 4 **Redefining building.**

ARXX™ ICF
Insulating Concrete Forms

Redefining building.

ARXX™ helps you deliver projects that are energy efficient, structurally tough, comfortable, quiet and green – quickly and cost-effectively. You will delight your customers – as proven in over 100,000 projects and 130 million square feet of walls and foundations since 1978.

Energy efficient

The combination of insulation from the ARXX form and the concrete core acts as a mass wall and blocks air infiltration, allowing buildings to save significantly on their heating and cooling costs.

Every project is different. An ARXX professional can help you get a true understanding of the savings you'll deliver to your client.



Flexible

ARXX Insulating Concrete Forms (ICF) are a lightweight rigid foam insulation block forming system for steel-reinforced concrete walls above and below grade. The blocks are stacked and locked together to quickly build a wall. These walls can be tall, short, of varying thicknesses, and designed with any curve or shape.



Superior structures

Structures built with ARXX ICFs are up to 25% stronger than other concrete walls – due to slow curing of the concrete within the insulated panels – and up to four times stronger than wood.* The high structural performance of ARXX ICF helps buildings withstand earthquakes, hurricanes and tornados, making them an ideal wall system for high-risk geographies. An ARXX insulated mass wall reduces noise, provides multi-hour fire resistance and more comfortable, stable indoor temperatures – a combination well-suited to hotels, multi-unit demising walls, theaters and churches. Resistance to mold, mildew and pests add to the quality of indoor air in an ARXX structure.



Faster build, lower cost

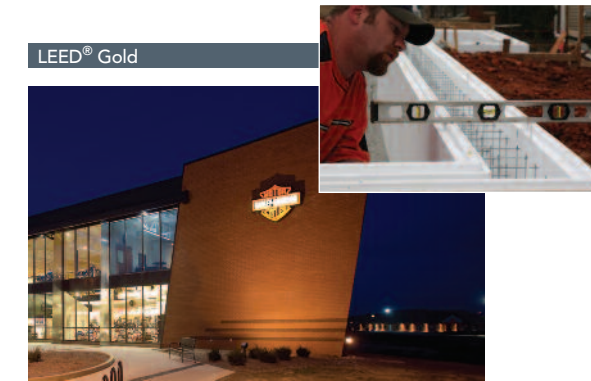
For conventional wood, steel stud or concrete construction to perform like ARXX, you need additional material, labor, subcontractors and turns around the building. With ARXX you don't need additional air barriers, vapor barriers or external insulation. An ARXX structure typically costs less than other wall assemblies that have comparable energy efficiency and structural, fire and noise performance. And the stay-in-place insulation of our ICF lets you place concrete in cold weather without additional heating for curing, which helps to accelerate your project schedule.

Green

ARXX can contribute significant credits towards LEED® certification. So whether you are building to LEED® Certified or LEED® Platinum rating levels, we can help you get there. ARXX products are made with recycled materials, improve indoor air quality, and emit no volatile organic compounds (VOCs).

A building system

Our building systems go beyond ICF block. Our value-add includes 30 years of accumulated building science expertise, practical experience on over 100,000 projects and a thorough knowledge of building codes and designs which support varied structural requirements and different climates. We tailor technical solutions, help minimize total project costs and provide custom project support – all to help you succeed.



Let us help you with your next project. Our product specialists can help you review project requirements and make recommendations.

Call us today at **1.800.293.3210**.

Go to arxx.com to learn more about our ICF products, projects and more. Or, send an email to info@arxx.com for more information.

The leader in ICF for 30 years

ARXX Corporation
800 Division St.
Cobourg, ON, Canada K9A 5V2
Toll free: 1.800.293.3210
arxx.com

* Based on a study conducted by Portland Cement Association.
ENERGY STAR is a registered trademark of the U.S. Environmental Protection Agency. LEED is a registered trademark of the U.S. Green Building Council. R-2000 is the official trademark of Natural Resources Canada. Novoclimat is a registered trademark of the Government of Quebec. The ARXX logo and the ARXX name are registered trademarks of ARXX Corporation. © 2009 ARXX Corporation. All rights reserved.